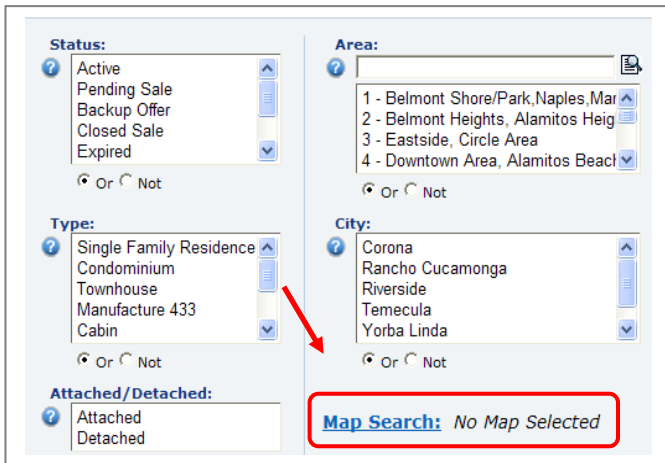


The Map Search allows agents to locate a specific area on a map and use the drawing tools available to create specific search parameters.

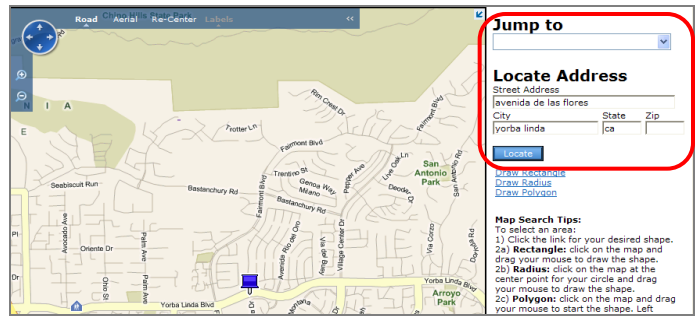
## Step 1:

On the Matrix Home Page, click on the **Search** tab and select the **Detail** or **Quick** search according to property type. On the search page, select criteria and click on **Map Search**.



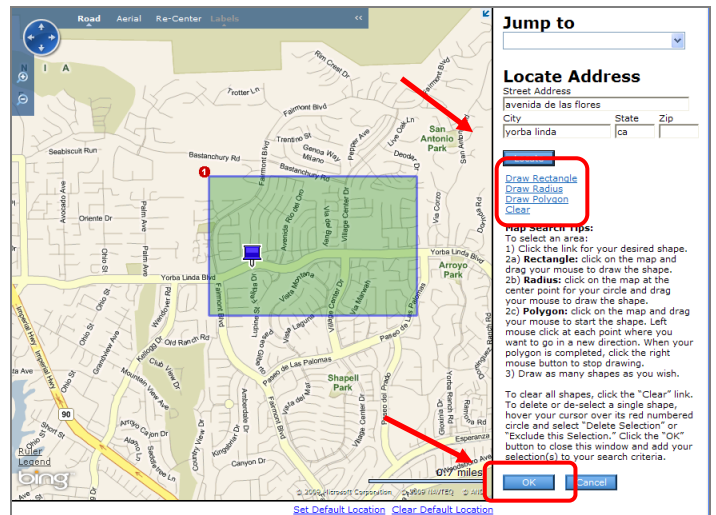
## Step 2:

To move the map to a **specific county**, select the county from the drop down menu. Or you can move the map to an address. Use the **Address fields** and click **Locate**. The location will be marked with a pin.



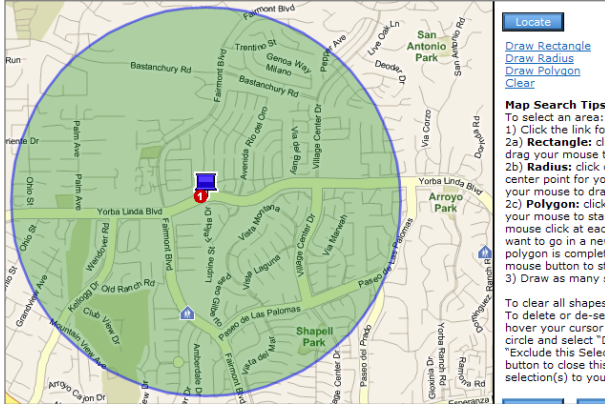
## Step 3:

To choose the area surrounding location there are drawing tools to mark off the geographic boundaries. Choose from **Draw Rectangle**, **Draw Radius**, or **Draw Polygon**. Once the area is selected using the **Drawing Tool** click **OK**.

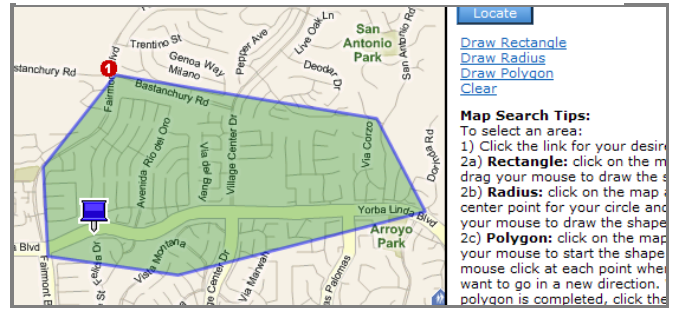


(Example of using the rectangle drawing tool)

(Example of using the radius drawing tool)



(Example of using the polygon drawing tool)



## Step 4:

On your search page, the Map Search will show Selected. Click on **Search** to find listings according to chosen criteria and Map Area Selected.

