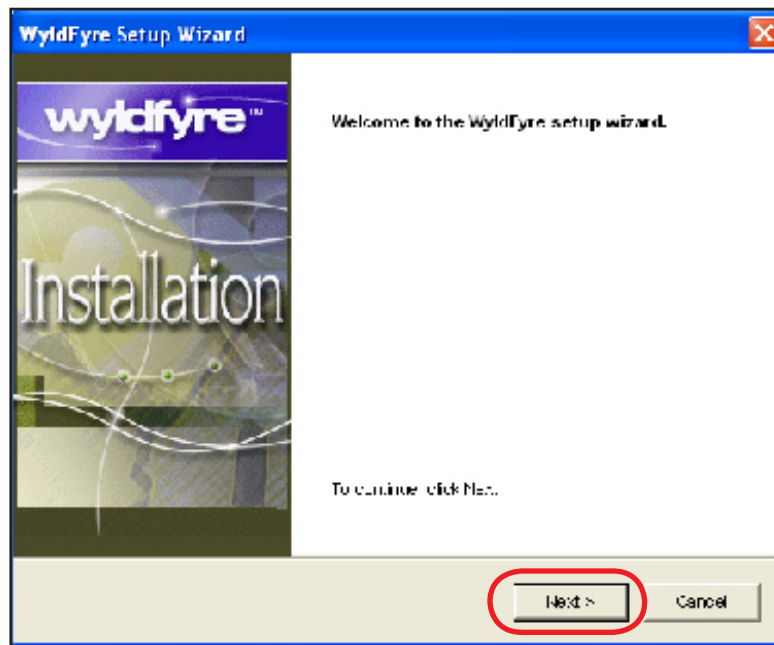


Quick Reference Guide

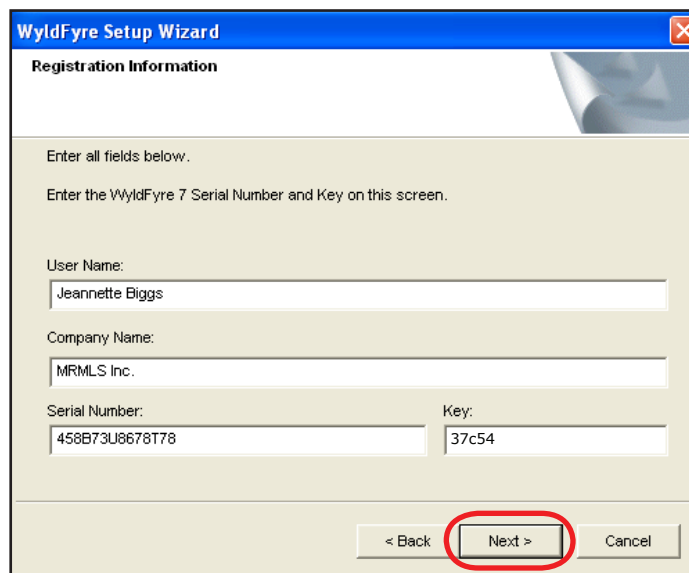
Step 1:

After inserting the CD into your computer, click **Next**. If the WyldFyre7 Setup Installation Wizard screen does not appear, go to the Windows taskbar, click Start, and then choose Run. In the Run dialog box type d:\setup.exe (substitute your CD-ROM drive letter for the "d"), and then click **OK**. Follow the on screen installation instructions.



Step 2:

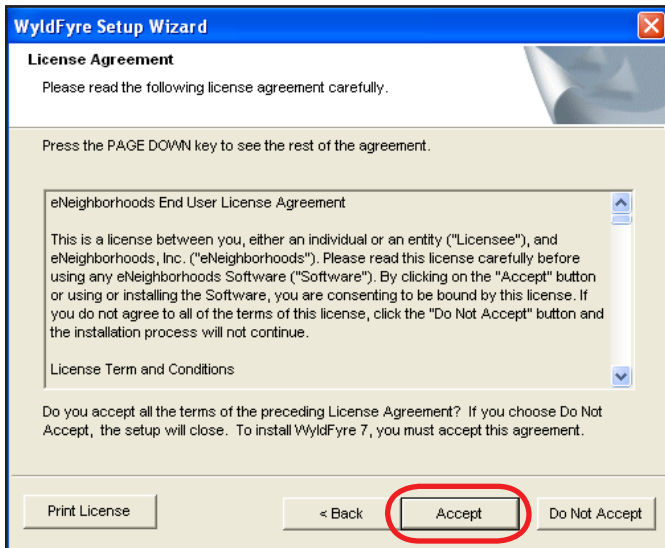
When prompted during installation, input your full name on the User Name field and the company you work for on the Company Name field. The Serial Number and Key field information is located on the label inside the CD cover. Click **Next**, verify your registration information and click **Yes**.



Quick Reference Guide

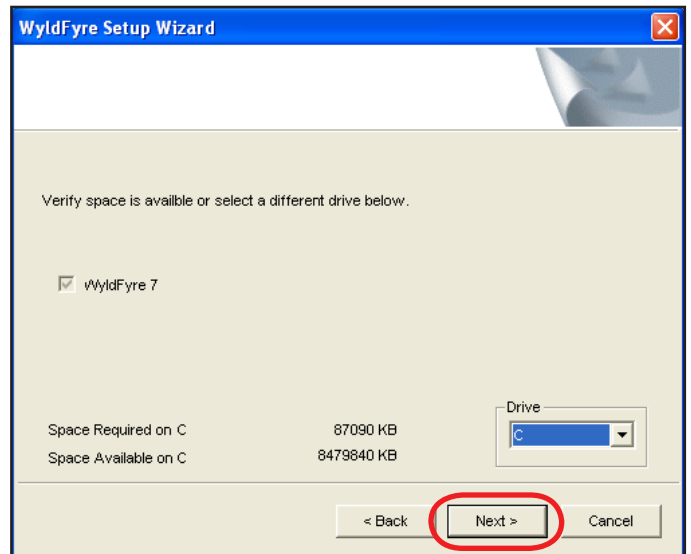
Step 3:

Read the User License Agreement.
Click **Accept**.



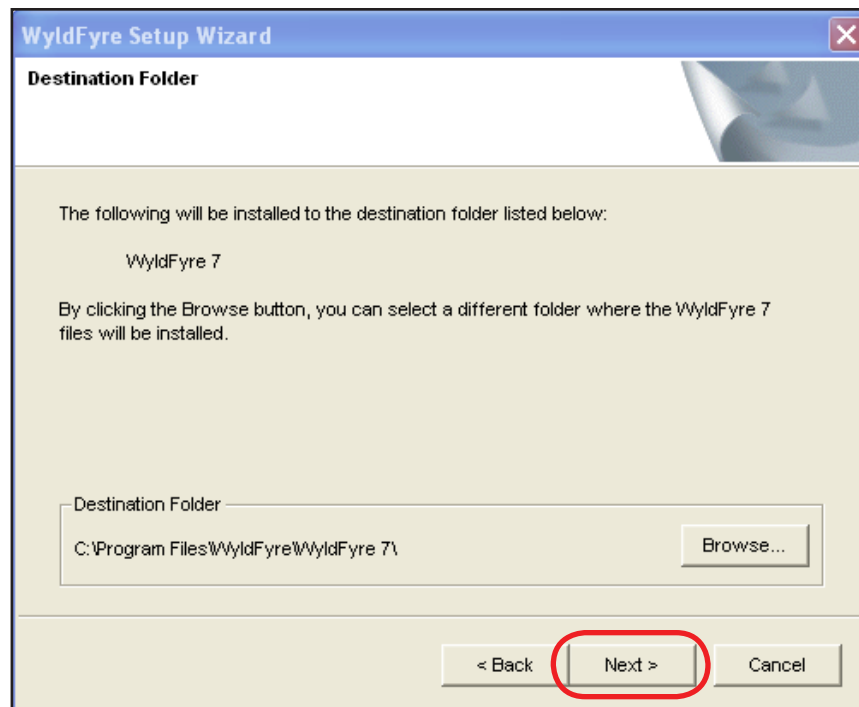
Step 4:

Verify the space available on drive C for the required space necessary for WyldFyre7.
Click **Next**.



Step 5:

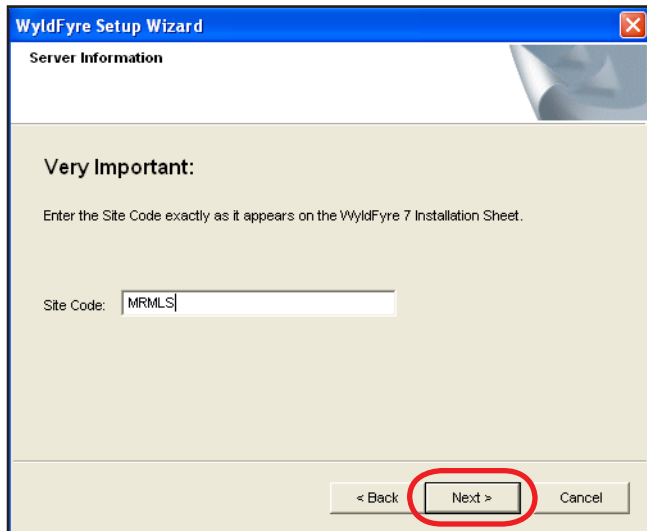
Click **Next** to accept the default Destination Folder. If you wish to place WyldFyre7 in a different Destination Folder, click Browse to locate the folder, select it, then click **Next**. Click **Yes**.



Quick Reference Guide

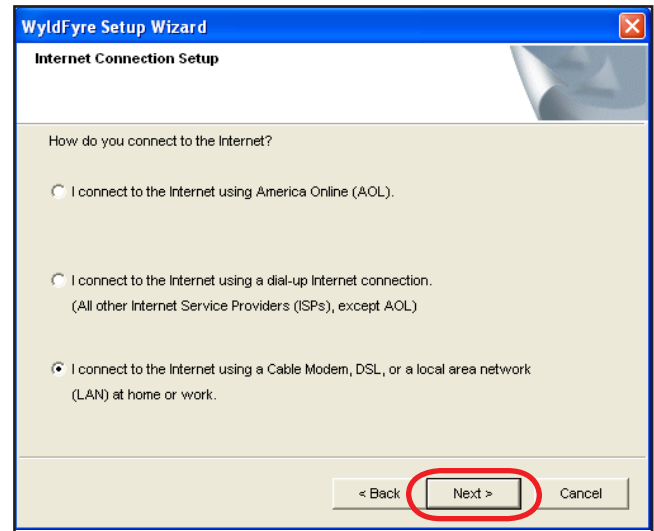
Step 6:

Input **Site Code** exactly as it appears on the label inside the CD cover. Click **Next**.



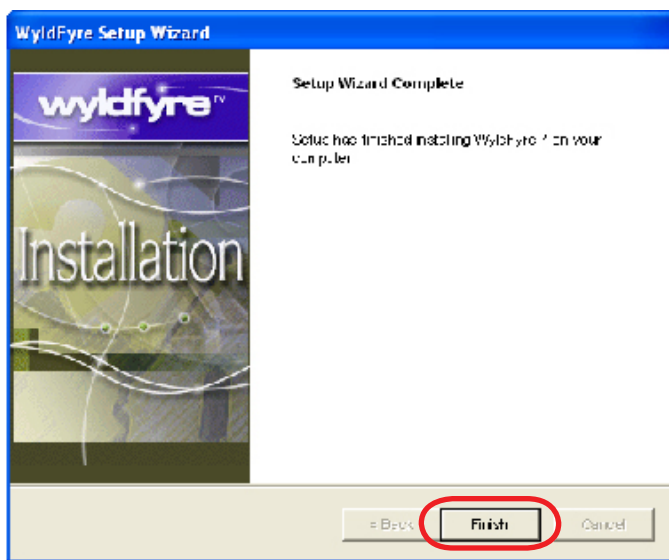
Step 7:

Select how you connect to the Internet. Click **Next**.



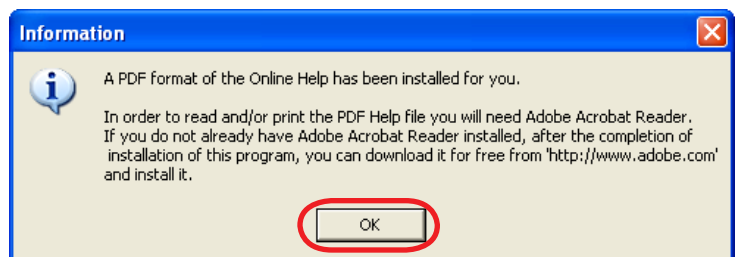
Step 8:

Click **Finish** when the installation is complete.



Step 9:

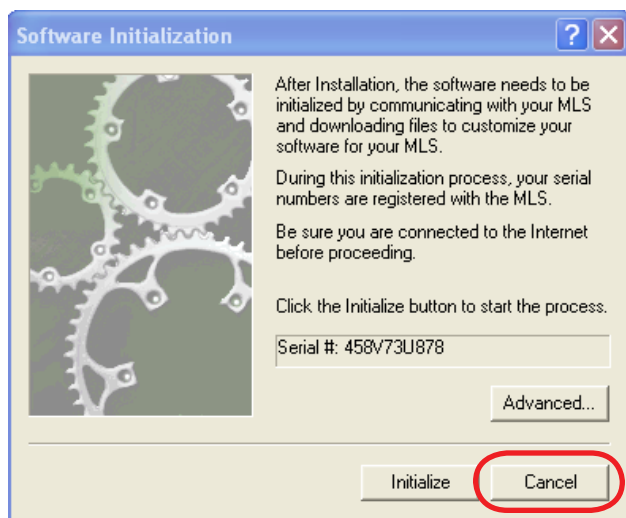
Click **Yes** if you need to install **Adobe Acrobat Reader**. Most computers already have this program installed. Adobe Reader is used to open the pdf file for the software documentation. Click **No** to ignore the **Adobe** installation, then click **OK**.



Quick Reference Guide

Step 10:

Before WyldFyre7 can be used or the initialization is complete, you must contact **MRMLS** Customer Support to register the communication connection between **WyldFyre7** and **MRMLS Matrix**. This only takes a few minutes and your connection will be complete within 24 hours. If you are not ready to register the communication connection, click **Cancel**, then **Yes** to exit. The initialization can be run at a later time by clicking the WyldFyre7 icon on your desktop.



MRMLS Customer Support
1-800-925-1525

Monday - Friday 8:30AM - 9:00PM
Saturday & Sunday 10:00AM - 3:00PM
OR
www.imrmls.com/SupportRequest

Step 11:

Once registration is complete, WyldFyre7 is ready for use. The User ID and Password for WyldFyre7 are the same as your MRMLS Matrix login, however, they **MUST** be entered in **CAPS**.

WyldFyre7 can be installed on more than one computer. Use the same Serial #, Key and Site Code information located on the inside label of the CD cover.

Go to www.imrmls.com/centsite/wyldfyre7.htm to print a copy of the **WyldFyre Jump Start Guide**. Follow the instructions for the Preferences Setup and the basic features of WyldFyre7.

Look for Training Classes on
WyldFyre7 coming soon!

www.imrmls.com/centsite/training_schedules.htm