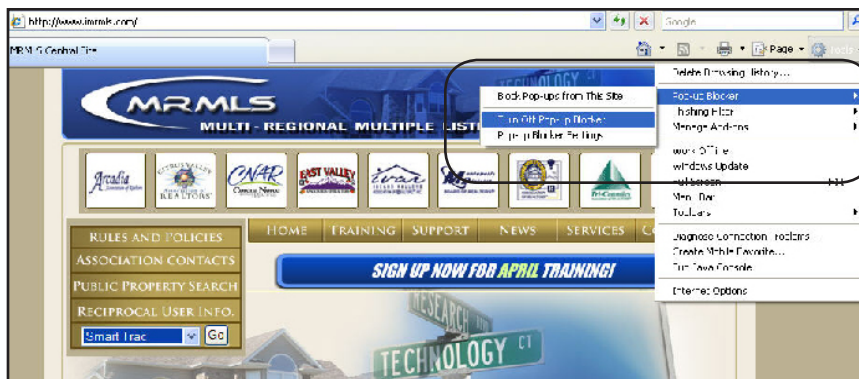


Quick Reference Guide

Internet users may have one or more of several Pop Up Blocker applications on their computers. They may also use one of several internet web browser applications. The following instructions explain how to turn off the Pop Up Blocker settings or allow pop ups from **MRMLS** websites in the **Windows Internet Explorer** web browser.

Step 1:

Open Internet Explorer. From the menu bar located at the top of your screen, click on **Tools, Pop Up Blocker, Turn Off Pop Up Blocker**. To allow pop ups from **MRMLS** websites, with the Pop Up Blocker turned on, click on **Tools, Pop Up Blocker, Pop Up Blocker Settings**.



Step 2:

In the **“Address of Web site to allow”** text box, input the following websites for all MRMLS Systems:

- <http://www.imrmls.com>
- <http://www.mrmlsmatrix.com>
- <http://maps.digitalmapcentral.com>
- <http://realist2.firstamres.com>
- <http://tm.marketlinx.com>

System Requirements:

•Operating System:

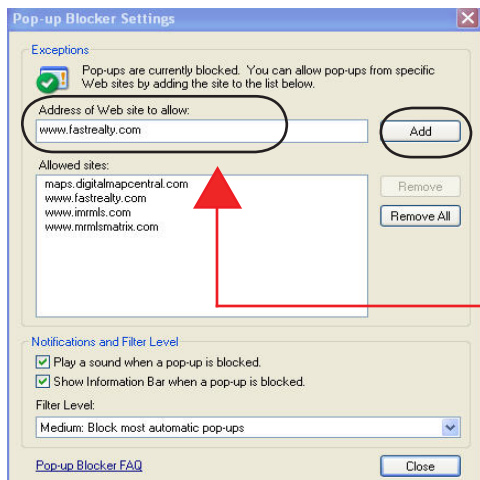
Windows 98 2nd Edition, Windows Me, Windows XP, Windows NT 4.0 and Windows 2000. If you are running a version of Windows NT, you must be running Windows NT Service Pack 3 or higher.

•Modem:

Minimum Requirements: 56K (Except for the MRMLS SmartMap System)
Preferred Requirements: Direct Internet Access (i.e. DSL, Cable or other High Speed Access)

•Browser:

Internet Explorer 6.0+ (other browsers may work, but are not supported)



Input the websites and click Add